

## Subsidiaries

### ARGENTINA

SDMO ARGENTINA S.A.

TEL. +54 11 48363511 - FAX +54 11 48363516

### BELGIUM

SDMO NV/SA

TEL. +32 3 646 04 15 - FAX +32 3 646 06 25

### BRAZIL

SDMO DO BRAZIL

TEL. +55 (11) 43 908 434 - FAX +55 (11) 43 908 434

### SPAIN

SDMO INDUSTRIES IBERICA

TEL. +34 902 30 56 56 - FAX +34 93 580 31 36

### US

SDMO GENERATING SETS

TEL. +1 305 863 00 12 - FAX +1 305 863 97 81

### UK

SDMO ENERGY LTD

TEL. +44 (0)1932 345 777 - FAX +44 (0)1932 350 033

### NIGERIA

SDMO LAGOS

TEL +234 (0) 80 56 66 64 44 - FAX + 33 (0) 1 72 27 55 62

## Offices

### SOUTH AFRICA

SDMO JOHANNESBURG

TEL. +33 (0) 631 594 701 - FAX +33 (0) 172 276 151

### ALGERIA

SDMO ALGER

TEL. +213 (0) 21 68 12 12 - FAX +213 (0) 21 68 14 14

### DUBAI

SDMO MIDDLE EAST

TÉL. + 971 50 51 496 83 - FAX +33 (0)1 72 27 55 52

### RUSSIA

SDMO MOSCOW

TEL. +7 926 838 05 34 - FAX +33 (0) 1 72 27 55 48



SDMO Industries - 12 bis rue de la villeneuve  
CS 92 848 - 29 228 Brest Cedex 2 - France

Tel. +33 (0)2 98 41 41 41 - Fax +33 (0)2 98 41 63 07

[www.sdmo.com](http://www.sdmo.com)

ISO 9001



SDMO industries  
Implantation en France

SDMO is a registered trademark of SDMO Industries.  
Non contractual document - In accordance with our product quality improvement policy, SDMO Industries reserves the right to modify, without prior notice, any specifications published in this catalogue. Photo credit: SDMO - Guillaume Team

5237-04.08.L

# Power Products

PPR-IN-DO-US-92

## 50Hz 60Hz

6kVA-700kVA  
11kW-600kW



Global Power  
Solution™

# An energetic response

**SDMO is recognised as one of the best manufacturers of generating sets in the world.** SDMO has channelled all its energy into designing a range which is both highly competitive and high-performance, the largest range available on the market. As a response to the increasingly precise nature of your energy requirements, which relate directly to the special traits of your particular industry, SDMO is devoting the majority of its resources to the continuous improvement of its range and services. The result of a strategy focussed on a single industry: exacting professionalism which provides you with a reliable source of energy, complying with the strictest of standards. The pioneering mindset of its teams, and the mastery and flexibility of its production methods mean that SDMO is constantly innovating. The proximity of its distribution network and dynamism of its customer services policy enable SDMO to be a powerful force and provide the basis of the company's values.

**SDMO, the source of energy for your comfort and safety.  
SDMO, providing the energy that links mankind.**



regardless of  
the power required



[www.sdmo.com](http://www.sdmo.com)

Whether you require emergency power to be able to cope with potential power cuts (e.g. hospitals, shopping centres) or continuous power when conventional electrical grids are faulty (power plants), SDMO will be able to offer you performance products from a large range which meets all the requirements of different markets. This range includes 3 main categories:

- **Standard products** (Portable Power, Residential Power, Power Products and Rental Power)
- **Expertise and Services** (Power Solutions, Training, Spare Parts, Technical Assistance)
- **Related products** (Nexys, Telys, Kerys command/control units)

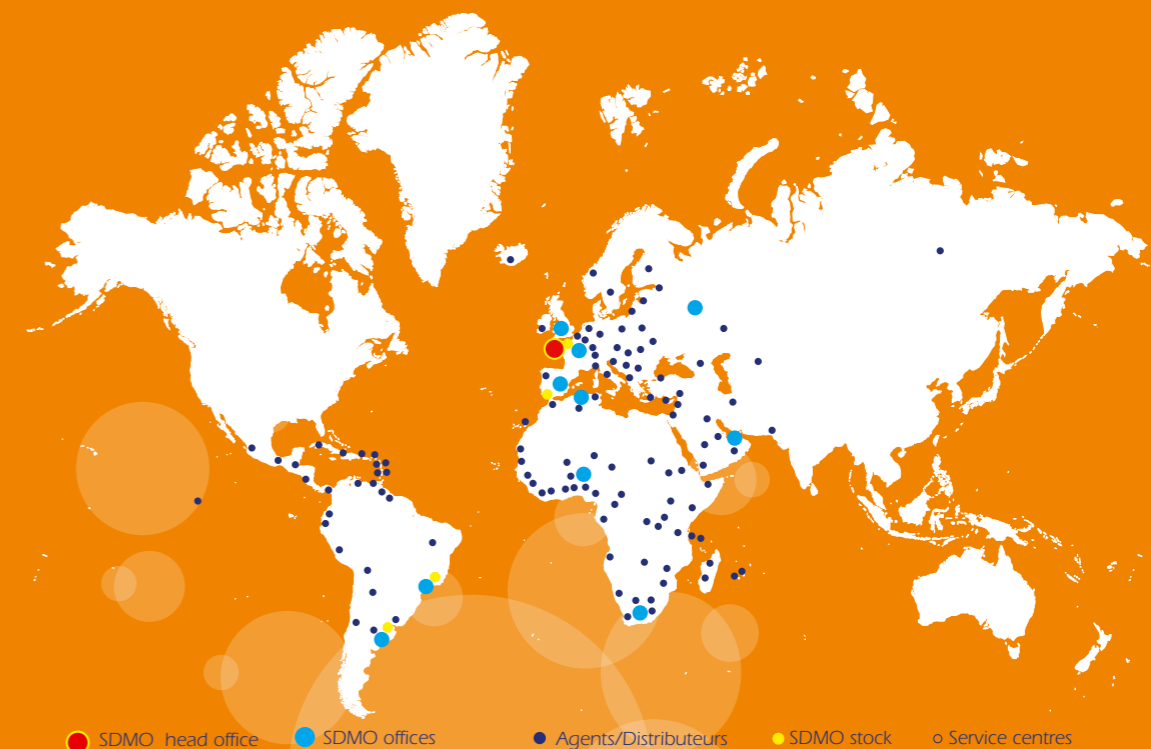
## National coverage, international presence, “think globally, act locally“

In order that SDMO can continue to grow and expand into new markets, it relies on:

- a distribution network present in over 150 countries,
- 7 overseas subsidiaries,
- 4 offices,
- 7 sales offices and  
3 regional HOs in France.

The reactivity of the company is based on its 5 storage platforms which, in co-operation with the subsidiaries, constitute an efficient means of operating.

The links forged with the Kolher group have strengthened SDMO's standing amongst its customers through a strategy of synergistic installations.



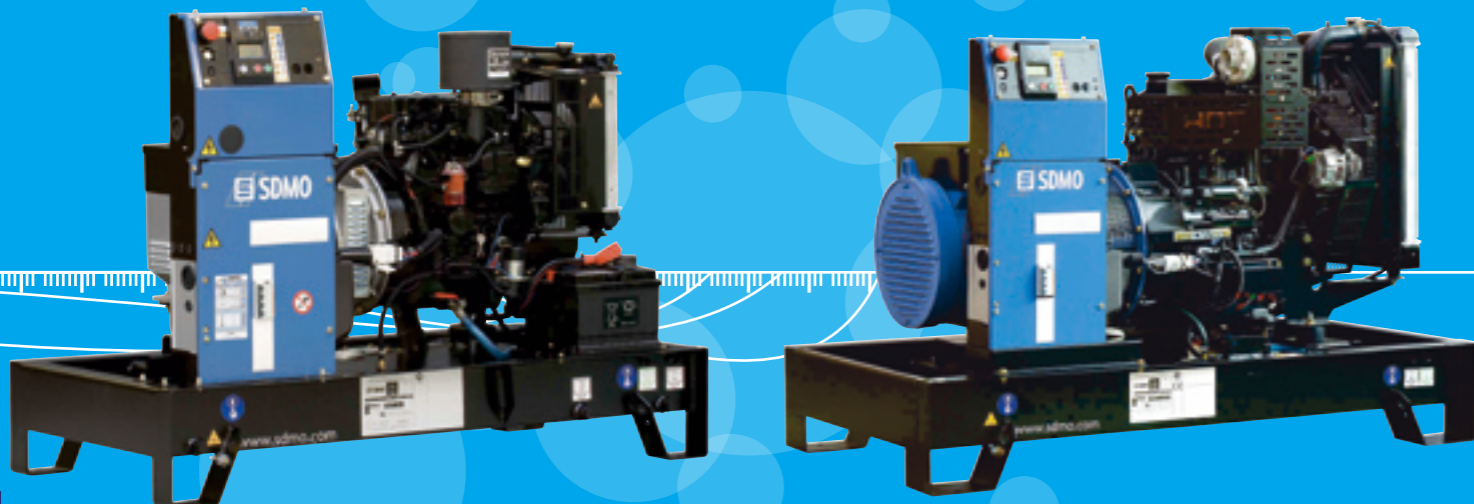
## Market logic for greater reactivity

The production plants in Brest are organised according to product lines relating to the product range offered:

- a production site for Portable Power generating sets and for Power Products with lower power,
  - a production site for Power Products, Rental Power and Residential Power ranges,
  - a production site used for the production of special Power Solutions applications.
- This overall synergy between industrial teams and sales and marketing departments reinforces the position of SDMO: prescription, reactivity, presence on the major markets.



# Power Products from 5kVA to 44kVA



PACIFIC T 8K

PACIFIC T 40U

### TECHNICAL SPECIFICATIONS

### THREE PHASE GENERATING SETS

### PACIFIC RANGE

Specifications 50 Hz 400-230 V			Specifications 60 Hz 480-277 V			General specifications										
GENE-RATING SETS <sup>(1)</sup>	kVA Cos 0.8		Cons 3/4 L/h	GENE-RATING SETS <sup>(2)</sup>	kWe ISO 8528*		Cons 3/4 L/h	Engine					Alternator	Compact Version <sup>(5)</sup>		
	PRP <sup>(3)</sup>	ESP <sup>(4)</sup>			PRP <sup>(3)</sup>	ESP <sup>(4)</sup>		Engine type	Cyl	Bore (mm)	Stroke (mm)	Cyl (L)		Type	Dimensions lxxwxh (m)	Wei-ghts <sup>(6)</sup> (kg)
T9HK	-	9	2,6	-	-	-	-	L2E SDH	2L	76	70	0,64	FT2MBS	1,22x0,70x0,92	240	50
T12HK	-	12	4,2	-	-	-	-	L3E SDH	3L	76	70	0,95	FT2MBS	1,22x0,70x0,92	260	50
T15HK	-	15	4,2	-	-	-	-	L3E SDH	3L	76	70	0,95	FT2MBS	1,41x0,72x1,03	294	50
T20HK	-	20	5,5	-	-	-	-	S3L2 SDH	3L	78	92	1,33	ECO3-2L	1,41x0,72x1,05	386	50
T27HK	-	27	6,3	-	-	-	-	S4L2SDH	4L	78	92	1,76	ECO28-2L	1,70x0,90x1,12	530	100
T8K	6,8	7,5	1,7	-	-	-	-	L3 E SD	3L	76	70	0,95	ECO3-2S	1,22x0,70x0,92	287	50
T12K	10,5	11,5	2,5	T11U	10,2	11,2	3,2	S3L2 SD	3L	78	92	1,33	ECO3-1L	1,41x0,72x1,05	387	50
T16K	14,5	16	3,4	T16U	14,5	16	4,2	S4L2 SD	4L	78	92	1,76	ECO3-2L	1,41x0,72x1,05	406	50
T22K	20	22	4,7	T20U	18,2	20	5,6	S4 Q2 SD	4L	88	103	2,50	ECO28-1L	1,70x0,90x1,12	560	100
T33K	30	33	6	T30U	27,3	30	8,2	S4S SD	4L	94	120	3,33	ECO28VL	1,70x0,90x1,14	660	100
T44K	40	44	7,3	T40U	36,4	40	8,7	S4S DT	4L	94	120	3,33	ECO32-3S	1,70x0,90x1,16	680	100

### TECHNICAL SPECIFICATIONS

### SINGLE PHASE GENERATING SETS

### PACIFIC RANGE

Specifications 50 Hz 230 V			Specifications 60 Hz 240 V			General specifications										
GENE-RATING SETS <sup>(7)</sup>	kVA Cos 0.8		Cons 3/4 L/h	GENE-RATING SETS	kWe ISO 8528*		Cons 3/4 L/h	Engine					Alternator	Compact Version <sup>(5)</sup>		
	PRP <sup>(3)</sup>	ESP <sup>(4)</sup>			PRP <sup>(3)</sup>	ESP <sup>(4)</sup>		Engine type	Cyl	Bore (mm)	Stroke (mm)	Cyl (L)		Type	Dimensions lxxwxh (m)	Wei-ghts <sup>(6)</sup> (kg)
T8HKM	-	7,5	2,6	-	-	-	-	L2E SDH	2L	76	70	0,64	S20FS-130	1,22x0,70x0,92	220	50
T11HKM	-	10,5	4,2	-	-	-	-	L3E SDH	3L	76	70	0,95	ECO3-2L	1,22x0,70x0,92	287	50
T6KM	5	5,5	1,7	-	-	-	-	L3E SD	3L	76	70	0,95	ECO3-2S	1,22x0,70x0,92	280	50
-	-	-	-	T8UM	6,8	7,5	2,2	L3E SD	3L	76	70	0,95	ECO3-2S	1,22x0,70x0,92	280	50
T9KM	7,8	8,6	2,5	T11UM	9,1	10	3,2	S3L2 SD	3L	78	92	1,33	ECO3-2L	1,41x0,72x1,05	396	50
T12KM	10,9	12	3,4	T16UM	13,6	15	4,2	S4L2 SD	4L	78	92	1,76	ECO28-1L	1,41x0,72x1,05	452	50
T17C2M	15,5	17	4,8	T20UM	18,2	20	5,6	S4Q2 SD	4L	88	103	2,50	ECO28VL	1,70x0,90x1,12	580	100
T25C2M	22,7	25	6,6	-	-	-	-	S4S SD	4L	94	120	3,33	ECO32-S	1,70x0,90x1,14	710	100
-	-	-	-	T30UM	27,3	30	8,2	S4S SD	4L	94	120	3,33	ECO28VL	1,70x0,90x1,14	660	100
-	-	-	-	T40UM	36,4	40	8,7	S4S DT	4L	94	120	3,33	482M45	1,70x0,90x1,14	730	100

(1) Also available in the following voltages: 415/240 V - 380/220 V - 220/127 V - 200/115 V  
 (2) Also available in the following voltages: 440/254 V - 220/127 V - 208/120 V  
 (3) PRP: Prime power available continuously at variable load for an unlimited number of hours per year in accordance with ISO 8528-1.  
 (4) ESP: Emergency Standby Power available for supplying emergency power in variable load applications in accordance with ISO 8528-1, no overload available for this service.

(5) The dimensions and weights apply to a generating set specified in the price list, without options  
 (6) Dry weight - without fuel  
 (7) Also available in the following voltages: 220 V - 240 V  
 \*ISO 8528: powers specified in compliance with the legislation in force

# Power Products from 20kVA to 440kVA



MONTANA J 110K

TELYS control unit optional

MONTANA J 400U

### TECHNICAL SPECIFICATIONS

### THREE PHASE GENERATING SETS

### MONTANA RANGE

Specifications 50 Hz 400-230 V			Specifications 60 Hz 480-277 V			General specifications										
GENE-RATING SETS <sup>(1)</sup>	kVA Cos 0.8		Cons 3/4 L/h	GENE-RATING SETS <sup>(2)</sup>	kWe ISO 8528*		Cons 3/4 L/h	Engine					Alternator	Compact Version <sup>(5)</sup>		
	PRP <sup>(3)</sup>	ESP <sup>(4)</sup>			PRP <sup>(3)</sup>	ESP <sup>(4)</sup>		Engine type	Cyl	Bore (mm)	Stroke (mm)	Cyl (L)		Type	Dimension lxxwxh (m)	Wei-ghts <sup>(6)</sup> (kgs)
J22	20	22	5,2	J20U	18	20	6,3	3029DF120	3L	106	110	2,9	ECO28L/4	1,70x0,89x1,22	720	100
J33	30	33	5,2	J30U	25	28	6,3	3029DF120	3L	106	110	2,9	ECO28VL	1,70x0,89x1,22	740	100
J44K	40	44	8,4	J40U	36	40	10,1	3029TF120	3L	106	110	2,9	ECO32-3S	1,70x0,89x1,22	820	100
J66K	60	66	12	J60U	55	60	14,5	4045TF120	4L	106	127	4,5	432M45	1,87x0,99x1,36	1000	180
J77K	70	77	12	J70U	64	70	14,5	4045TF120	4L	106	127	4,5	432L65	1,87x0,99x1,36	1110	180
J88K	80	88	14	J80U	73	80	16	4045TF220	4L	106	127	4,5	432L8	1,87x0,99x1,36	1110	180
J110K	100	110	16,5	J100U	91	100	19	4045HF120	4L	106	127	4,5	442VS45	1,95x1,08x1,33	1240	190
J130K	120	132	18,5	J120U	106	117	24	6068TF220	6L	106	127	6,7	442S7	2,37x1,11x1,48	1570	340
J165K	150	165	25	J150U	137	150	29	6068HF120-153	6L	106	127	6,7	442M95	2,37x1,11x1,48	1640	340
J200K	182	200	31,3	J175U	159	175	36,1	6068HF120-183	6L	106	127	6,7	462M3	2,37x1,11x1,48	1730	340
-	-	-	-	J200U	182	200	36,9	6068HF475	6L	106	127	6,7	462M5	2,37x1,11x1,48	1790	340
J220C2	200	220	32,6	-	-	-	-	6068HFS77	6L	106	127	6,7	462M5	2,37x1,11x1,48	1790	340
J275K	250	275	40,1	-	-	-	-	6081HF001	6L	116	129	8,1	462L6	2,90x1,30x1,70	2170	390
J300K	275	303	42,6	J250U	227	250	46,1	6081HF001	6L	116	129	8,1	462L9	2,90x1,30x1,68	2235	390
-	-	-	-	J275U	250	275	47,4	6081HF070	6L	116	129	8,1	462L9	2,90x1,30x1,70	2235	390
J400K	365	402	59,4	J350U	319	350	76	6125HF070	6L	127	165	12,5	472VS2	3,16x1,34x1,79	3090	470
J440K	400	440	59,4	J400U	364	400	76	6125HF070	6L	127	165	12,5	472VS3	3,16x1,34x1,79	3120	470

### TECHNICAL SPECIFICATIONS

### SINGLE PHASE GENERATING SETS

### MONTANA RANGE

Specifications 50 Hz 230 V			Specifications 60 Hz 240 V			General specifications										
GENE-RATING SETS <sup>(7)</sup>	kVA Cos 0.8		Cons 3/4 L/h	GENE-RATING SETS	kWe ISO 8528*		Cons 3/4 L/h	Engine					Alternator	Compact Version <sup>(5)</sup>		
	PRP <sup>(3)</sup>	ESP <sup>(4)</sup>			PRP <sup>(3)</sup>	ESP <sup>(4)</sup>		Engine type	Cyl	Bore (mm)	Stroke (mm)	Cyl (L)		Type	Dimensions lxxwxh (m)	Wei-ghts <sup>(6)</sup> (kg)
-	-	-	-	J30UM	25	28	6,3	3029DF120	3L	106	110	2,9	ECO32-3S	1,70x0,89x1,22	800	100
-	-	-	-	J40UM	36	40	10,1	3029TF120	3L	106	110	2,9	432M45	1,70x0,89x1,22	860	100
-	-	-	-	J70UM	61	67	14,5	4045TF120	4L	106	127	4,5	442VS45	1,87x0,99x1,36	1150	190

(1) Also available in the following voltages: 415/240 V - 380/220 V - 220/127 V - 200/115 V  
 (2) Also available in the following voltages: 440/254 V - 220/127 V - 208/120 V  
 (3) PRP: Prime power available continuously at variable load for an unlimited number of hours per year in accordance with ISO 8528-1.  
 (4) ESP: Emergency Standby Power available for supplying emergency power in variable load applications in accordance with ISO 8528-1, no overload available for this service.

(5) The dimensions and weights apply to a generating set specified in the price list, without options  
 (6) Dry weight - without fuel  
 (7) Also available in the following voltages: 220 V - 240 V  
 \*ISO 8528: powers specified in compliance with the legislation in force

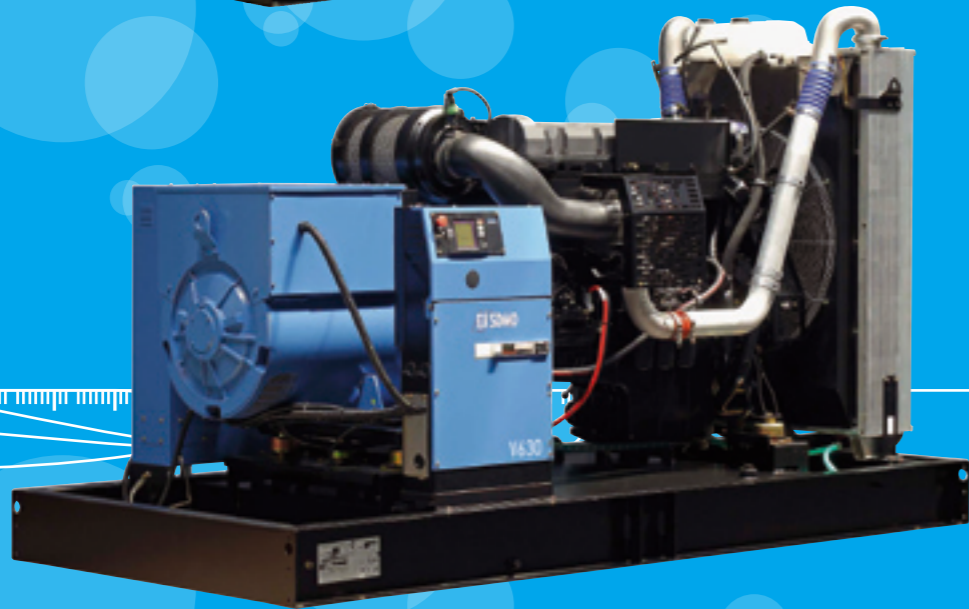




ATLANTIC  
V400U

**SDMO  
PRODUCT  
PLUS**

Resistance calculation, modal analysis of vibration frequencies, study of the sound intensity measurement... this is the type of technology our engineers have at their disposal when designing our products and guaranteeing they comply with international standards.



ATLANTIC  
V630C2

**TECHNICAL SPECIFICATIONS**

**THREE PHASE GENERATING SETS**

**ATLANTIC RANGE**

Specifications 50 Hz 400-230 V			Specifications 60 Hz 480-227 V			General specifications										
GENERA- TING SETS (1)	kVA Cos 0.8		Cons 3/4 L/h	GENERA- TING SETS (2)	kWe ISO 8528*		Cons 3/4 L/h	Engine				Alternator	Compact Version <sup>(5)</sup>			
	PRP (3)	ESP (4)			PRP (3)	ESP (4)		Engine type	Cyl	Bore (mm)	Stroke (mm)		Cyl (L)	Type	Dimensions l x w x h (m)	Wei- ghts <sup>(6)</sup> (kg)
V220C2	200	220	32,5	V200U	182	200	36,5	TAD733GE	6L	108	130	7,2	462M5	2,37x1,11x1,54	1850	340
V275C2	250	275	42,6	V250U	227	250	45,7	TAD734GE	6L	108	130	7,2	462L6	2,90x1,30x1,66	2200	390
V350C2	318	350	50,6	V300U	273	300	52,8	TAD941GE	6L	120	138	9,4	462VL12	3,16x1,34x1,76	2850	470
V375C2	341	375	50,6	-	-	-	-	TAD941GE	6L	120	138	9,4	472VS2	3,16x1,34x1,76	2780	470
-	-	-	-	V350U	319	350	58,5	TAD1241GE	6L	131	150	12,1	472VS2	3,16x1,34x1,80	2900	470
V410C2	375	413	55	-	-	-	-	TAD1241GE	6L	131	150	12,1	472VS3	3,16x1,34x1,81	3190	470
V440C2	400	440	59,5	V400U	364	400	67,8	TAD1242GE	6L	131	150	12,1	472VS3	3,16x1,34x1,81	3238	470
V500C2	455	500	69,2	V450U	409	450	78,4	TAD1640GE	6L	144	165	16,1	472S5	3,47x1,63x2,04	3490	500
V550C2	500	550	75,4	V500UC2	455	500	88,8	TAD1641GE	6L	144	165	16,1	472M7	3,47x1,63x2,04	3620	500
V630C2	573	630	85	-	-	-	-	TAD1642GE	6L	144	165	16,1	472L9	3,47x1,63x2,08	3780	610
-	-	-	-	V550UC2	500	550	97,1	TAD1642GE	6L	144	165	16,1	472M7	3,47x1,63x2,08	3650	610
V700C2	636	700	94,5	V600UC2	545	600	105,7	TWD1643GE	6L	144	165	16,1	491S4	3,47x1,63x2,08	3890	610

(1) Also available in the following voltages: 415/240 V - 380/220 V - 220/127 V - 200/115 V  
 (2) Also available in the following voltages: 440/254 V - 220/127 V - 208/120 V  
 (3) PRP: Prime power available continuously at variable load for an unlimited number of hours per year in accordance with ISO 8528-1.  
 (4) ESP: Standby power available for emergency use at variable load in accordance with ISO 8528-1, no overload available for this service.  
 (5) The dimensions and weights apply to a generating set specified in the price list, without options  
 (6) Dry weight - without fuel  
 \* ISO 8528: powers specified in compliance with the legislation in force

(4) ESP: Standby power available for emergency use at variable load in accordance with ISO 8528-1, no overload available for this service.  
 (5) The dimensions and weights apply to a generating set specified in the price list, without options  
 (6) Dry weight - without fuel  
 \* ISO 8528: powers specified in compliance with the legislation in force

**basic and options**

**EQUIPMENT**

Basic and options	PACIFIC			MONTANA					ATLANTIC
	T11U/12/15H/20H T6/8/9/12	T12/16/17 T20U/22 T27H/30U/33	T40U/44	J20U/J22 J30U/33 J40U/44	J60U/66/ 70U/77 J80U/88 J100U/110	J120U/130 J150U/165 J175U/200	J200U/220 J250U/275 J300 J275U	J350 J400 J440	
engine	4 stroke water-cooled diesel engine Mechanical adjustment Electronic adjustment Standard air filter Air filter with interchangeable cartridge 220/240 V preheating resistor Control and interface unit (CIU) Single bearing alternator IP 23, T° class =H, insulation class H Anti condensation resistor Reinforced insulation Synchronising CT coupling + 3 function regulator AREP excitation PMG + Regulator CE compliance of the control unit								
alternator	Protective grille for hot parts CSA NRTL/C compliance Power circuit breaker Mechanically welded chassis with antivibration suspension Supplied in colour RAL 9005/5007 (black/blue) delivered in plastic film Supplied with oil and coolant -30°C Oil drain tap + diesel or gas pipe Oil drainage pump 9 dB(A) silencer supplied separately 9 dB(A) silencer not supplied Adaptable 9 dB(A) silencer (not compatible with CEL 02) 29 dB(A) silencer supplied separately 40 dB(A) silencer supplied separately 40 cm extension piece Compensator with brackets or pipe Manifold protective grille (mandatory for CE) Radiator for max wiring harness T° 50°C with drain tap (depending on model)								
generating set	FD 11 Protective grille for fan and rotating parts Protective grille for radiator wiring harness Charging alternator and starter Batteries with cables and battery mounting No battery or battery mounting (cables are supplied) Battery isolating switch Tank integrated into the chassis High autonomy double wall chassis Diesel outlet not connected (no tank) Automatic power supply kit for chassis tank Automatic power supply for separate tank 1 or 2 pump automatic kit Fluid recovery tank Bulk tank on DT Diesel separator pre-filter Separate tank on 500 L tank Separate tank on 1000 L tank Bulk tank level alarm for separate tank <sup>(5)</sup>								
oil	User manual and commissioning guide (paper version) - French, English or Spanish <sup>(4)</sup> User manual and commissioning guide (paper version) - French, English or Spanish <sup>(4)</sup> User manual and commissioning guide (CD version) - French, English or Spanish Engine parts catalogue (paper version) - English Engine parts catalogue (CD version) - English Engine repair and workshop manual (paper version) - English Engine repair and workshop manual (CD version) - English Standard tool kit Standard tool chest GENSERVICE 500 spare parts GENSERVICE 1000 spare parts								
exhaust	User manual and commissioning guide (paper version) - French, English or Spanish <sup>(4)</sup> User manual and commissioning guide (paper version) - French, English or Spanish <sup>(4)</sup> User manual and commissioning guide (CD version) - French, English or Spanish Engine parts catalogue (paper version) - English Engine parts catalogue (CD version) - English Engine repair and workshop manual (paper version) - English Engine repair and workshop manual (CD version) - English Standard tool kit Standard tool chest GENSERVICE 500 spare parts GENSERVICE 1000 spare parts								
cooling	User manual and commissioning guide (paper version) - French, English or Spanish <sup>(4)</sup> User manual and commissioning guide (paper version) - French, English or Spanish <sup>(4)</sup> User manual and commissioning guide (CD version) - French, English or Spanish Engine parts catalogue (paper version) - English Engine parts catalogue (CD version) - English Engine repair and workshop manual (paper version) - English Engine repair and workshop manual (CD version) - English Standard tool kit Standard tool chest GENSERVICE 500 spare parts GENSERVICE 1000 spare parts								
starting	User manual and commissioning guide (paper version) - French, English or Spanish <sup>(4)</sup> User manual and commissioning guide (paper version) - French, English or Spanish <sup>(4)</sup> User manual and commissioning guide (CD version) - French, English or Spanish Engine parts catalogue (paper version) - English Engine parts catalogue (CD version) - English Engine repair and workshop manual (paper version) - English Engine repair and workshop manual (CD version) - English Standard tool kit Standard tool chest GENSERVICE 500 spare parts GENSERVICE 1000 spare parts								
diesel	User manual and commissioning guide (paper version) - French, English or Spanish <sup>(4)</sup> User manual and commissioning guide (paper version) - French, English or Spanish <sup>(4)</sup> User manual and commissioning guide (CD version) - French, English or Spanish Engine parts catalogue (paper version) - English Engine parts catalogue (CD version) - English Engine repair and workshop manual (paper version) - English Engine repair and workshop manual (CD version) - English Standard tool kit Standard tool chest GENSERVICE 500 spare parts GENSERVICE 1000 spare parts								
accessories	User manual and commissioning guide (paper version) - French, English or Spanish <sup>(4)</sup> User manual and commissioning guide (paper version) - French, English or Spanish <sup>(4)</sup> User manual and commissioning guide (CD version) - French, English or Spanish Engine parts catalogue (paper version) - English Engine parts catalogue (CD version) - English Engine repair and workshop manual (paper version) - English Engine repair and workshop manual (CD version) - English Standard tool kit Standard tool chest GENSERVICE 500 spare parts GENSERVICE 1000 spare parts								



1 battery isolating switch (EN16)      2 protective grille for hot parts (CEL02)      3 diesel separator pre-filter (FD05)      4 user manual and commissioning guide (AD21)

As standard  
 Not available  
 Several possible options - please consult us  
 Option code  
 Free option  
 Exc. J200/220/275 Standard electronic control device  
 Not possible on T12, T16  
 Not possible on T12, T16UM  
 (3) 12V for V220C2 and V200U  
 (4) Additional copy  
 (5) Not possible on J130K and J165K  
 (6) Not possible on V220C2 and V200U



# Enclosures

8

**SDMO  
PRODUCT  
PLUS**

The new design of our modular soundproofing enclosures, will allow you to make savings in both costs and space!



M230 ENCLOSURE



M228 ENCLOSURE



M227 ENCLOSURE



M226 ENCLOSURE



M229 ENCLOSURE



M126 ENCLOSURE



M127 ENCLOSURE



M128 ENCLOSURE



M129 ENCLOSURE

## THREE PHASE

## GENERATING SETS & ENCLOSURES

	Specifications 50 Hz			Specifications 60 Hz		General specifications				
	Generating sets	LWA	dB(A)@1m	dB(A)@7m	Generating sets	dB(A)@7m	Enclosure	Tank (L)	Dimensions L x w x h (m)	Weight <sup>(1)</sup> (kg)
PACIFIC	T8K	85	69	59	-	-	M125	50	1,48x0,70x1,03	400
	T9K	94	78	68	-	-	M125	50	1,48x0,70x1,03	360
	T9HK	94	78	68	-	-	M125	50	1,48x0,70x1,03	360
	T12K	86,1	70,4	60,4	T11U	62,5	M126	50	1,75x0,72x1,23	535
	T12HK	95	79	69	-	-	M125	50	1,48x0,70x1,03	380
	T15HK	96	80,8	70,8	-	-	M126	50	1,75x0,72x1,23	442
	T16K	87	70,7	60,7	T16U	64	M126	50	1,75x0,72x1,23	554
	T20HK	96	80,8	70,8	-	-	M126	50	1,75x0,72x1,23	534
	T22K	87	71	61	T20U	65,4	M127	100	2,08x0,96x1,42	790
	T27HK	97	81	71	-	-	M127	100	2,08x0,96x1,42	752
MONTANA	T33K	90	73	63	T30U	66,3	M127	100	2,08x0,96x1,42	890
	T44K	87	71,1	61,1	T40U	69,2	M127	100	2,08x0,96x1,42	920
	J22	91	75	65	J20U	65	M127	100	2,08x0,96x1,42	950
	J33	91	74,9	65	J30U	67,6	M127	100	2,08x0,96x1,42	970
	J44K	90	73,4	63	J40U	67	M127	100	2,08x0,96x1,42	1040
	J66K	92	75,6	66	J60U	66	M128	180	2,30x1,08x1,68	1410
	J77K	92	75,6	66	J70U	67	M128	180	2,30x1,08x1,68	1530
	J88K	95	79,5	70	J80U	73,1	M128	180	2,30x1,08x1,68	1530
	J110K	94	77	67	J100U	70	M129	190	2,55x1,17x1,68	1640
	J130K	96	77,6	67,6	J120U	68,9	M226	340	3,51x1,20x1,83	2160
ATLANTIC	J165K	95	78,6	68,8	J150U	68,9	M226	340	3,51x1,20x1,83	2230
	J200K	95	79,4	69	J175U	68,9	M226	340	3,51x1,20x1,83	2320
	J220C2	95	78,6	68,6	J200U	70,1	M226	340	3,51x1,20x1,83	2390
	J275K	95	79,5	69,5	J275U	72,5	M227	390	4,00x1,38x2,13	3215/3150
	J300K	95	79,5	69,5	J250U	72,5	M227	390	4,00x1,38x2,13	3215
	J400K	96	76,2	66,5	J350U	71	M228	470	4,48x1,41x2,43	4220
	J440K	96	76,3	66,6	J400U	71	M228	470	4,48x1,41x2,43	4250
	V220C2	96,6	78,5	68,5	V200U	71,7	M226	340	3,51x1,20x1,83	2490
	V275C2	96	78	68	V250U	78	M227	390	4,00x1,38x2,13	3130
	V350C2	97	77,2	67	V300U	69,9	M228	470	4,48x1,41x2,43	3980
	V375C2	97	77,2	67	-	-	M228	470	4,48x1,41x2,43	3910
	V410C2	96	79,7	70	V350U	73	M228	470	4,48x1,41x2,43	4320/4020
	V440C2	96	79,7	70	V400U	73	M228	470	4,48x1,41x2,43	4320
	V500C2	97	77,6	68	V450U	73,8	M229	500	5,03x1,56x2,44	4740
	V550C2	97	78,1	68	V500UC2	75	M229	500	5,03x1,56x2,44	4870/5170
	V630C2	100	81,8	71,5	V550UC2	75,4	M230	610	5,03x1,69x2,66	5300
	V700C2	105	85	75	V600UC2	79	M230	610	5,03x1,69x2,66	5410

## SINGLE PHASE

	Specifications 50 Hz			Specifications 60 Hz		General specifications				(1) Net weight without fuel
	Generating sets	LWA	dB(A)@1m	dB(A)@7m	Generating sets	dB(A)@7m	Enclosure	Tank (L)	Dimensions L x w x h (m)	
PACIFIC	T6KM	85	69	59	-	-	M125	50	1,48x0,70x1,03	390
	T8HKM	85	69	59	-	-	M125	50	1,48x0,70x1,03	340
	-	-	-	-	T8UM	68	M125	50	1,48x0,70x1,03	390
	T9KM	86	70,4	60,4	T11UM	62,5	M126	50	1,75x0,72x1,23	544
	T11HKM	97	79	69	-	-	M125	50	1,48x0,70x1,03	400
	T12KM	87	70,7	60,7	T16UM	64	M126	50	1,75x0,72x1,23	600
	T17C2M	87	71	61	T20UM	65,4	M127	100	2,08x0,96x1,42	810
	T25C2M	90	73	63	-	-	M127	100	2,08x0,96x1,42	890
	-	-	-	-	T30UM	66,3	M127	100	2,08x0,96x1,42	940
	-	-	-	-	T40UM	69	M127	100	2,08x0,96x1,43	960
MONTANA	-	-	-	J30UM	67,6	M127	100	2,08x0,96x1,42	1020	
	-	-	-	J40UM	67	M127	100	2,08x0,96x1,42	1090	
	-	-	-	J70UM	67	M129	190	2,55x1,17x1,68	1550	
	-	-	-	-	-	-	-	-	-	

## BASIC AND OPTIONS

## EQUIPMENT

	M125	M126	M127 M128 M129	M226	M227 M228 M229	M230
General Specifications	Assembled soundproofing enclosure	SiM	SiM	SiM	SiM	SiM
	Non-assembled soundproofing enclosure (supplied as a kit) (1)	x	SiK	SiK	x	x
	Black/Blue (RAL 9005/RAL 5007)	•	•	•	•	•
	Special colour application, to replace RAL 5007 (lead time 8 weeks)	CN 08	CN 08	CN 08	CN 08	CN 08
	Electrogalvanised steel panels before paint application protected by a rust-resistant polyester paint powder	•	•	•	•	•
	Bichromate galvanised bolting and stainless steel rivets, polyamide or anodised aluminium alloy hinges, seals provided by flexible joints between the bodywork components	•	•	•	•	•
	Soundproofing foam between 20 and 50 mm thick	•	•	•	•	•
	Bulk tank on daily service tank	x	x	x	FD 04	FD 04
	Fluid recovery tank	•	•	•	x	x
	High autonomy double wall chassis	x	FD 02	FD 02	FD 02	FD 02
Safety	Lockable doors with a unique key	•	•	•	•	•
	Lockable control unit porthole	•	•	•	•	•
	Emergency stop button fitted on outside of enclosure	•	•	•	•	•
	Access to diesel, oil and battery behind lockable doors	•	•	•	•	•
	Protective grille for rotating parts	•	•	•	•	•
	Exhaust integrated into the enclosure	•	•	•	•	•
	Galvanised metal air emission sleeve	CN 03	CN 03	CN 03	CN 03	CN 03
	Remote connection termination box for armoured cables	x	CN 06	CN 06	CN 06	CN 06
	Socket kit (400 V Three phase + N) (2)	CN 04	CN 04	CN 04	x	x
	Lifting ring (number of points)	1	1	1	1	2
Handling	Single base panel	x	x	x	CN05	CN05
	Access doors on each side (number)	2+1	2+1	2+1	2+2	2+2
Maintenance	Oil drainage pump	EN 04	EN 04	EN 04	EN 04	EN 06
	Electric control unit accessible via a door	•	•	•	•	•
Trailers(3)	Road trailer with fixed drawbar and ball attachment	TR 10	TR 10	x	x	x
	Road trailer with hinged drawbar and ring attachment 68x42	TR 11	TR 11	TR 11	TR 11	x
	40 mm eye (DIN German)	TR25	TR 21	TR 21	TR 21	x
	76 mm eye (NATO)	TR25	TR 25	TR 25	TR 25	x
	50 mm ball (universal)	TR26	TR 26	TR 26	TR 26	x
	Spare wheel kit	TR31	TR 31	TR 31	TR 31	x

TR 21  
(1)

Free option  
This option is only available to persons who have received the requisite training

(2)  
(3)

Requires differential protection  
For M127 to M226 enclosures in Europe, consult the RENTAL POWER 2008 documentation

x  
CN 08

As standard  
Not available  
Option code

All SDMO generating sets are compliant with directive 2000/14/CE and its products are checked and validated by an approved laboratory, CETIM.





## INTRODUCTION

SDMO offers a solution to make standard generating sets available more quickly. Thirty 50 Hz models from 12 to 1100 kVA and twenty-six 60 Hz models from 11 to 550 kW in the Power Products range are in stock world-wide and can be delivered to you within very short timeframes. These generating sets are available in compact or covered versions. Aftermarket options are available to order (silencers, normal/emergency switches, Genservice 500 etc.)

## SDMO PRODUCT PLUS

**Responsiveness**  
Simply contact our sales department for an immediate update on lead times for availability.

**Deadline**  
Availability in stock platform. Rapid availability.

**Price**  
Available at the standard RRP for the same configuration.

## PLANNING PRODUCTION STORAGE

Ordering a generating set during the planning or production phase = available as soon as possible

Ordering a generating set available on the platform = available immediately

## CONFIGURATIONS AVAILABLE IN THE X'PRESS RANGE

50Hz	T9 to J220/V220		J300 *		V275		J440 + V330 to X1100	
	compact	covered	compact	covered	compact	covered	compact	covered
4 pole circuit breaker	•	•	•	•	•	•	•	•
Control unit	NEXYS	NEXYS	NEXYS	NEXYS	TELYS	TELYS	TELYS	TELYS
Card for measurement	•	•	•	•	•	•	•	•
Battery charger	•	•	•	•	•	•	•	•
Engine preheating	•	•	•	•	•	•	•	•
Prewiring for auto start-up	•	•	•	•	•	•	•	•
CE label	•	•	•	•	•	•	•	•
Silencer	•	•	•	•	•	•	•	•

60Hz	T11 to T30 UM		T11 to T30 U		J30 to J70 UM		J30 to J250 U		V350 to V550 U	
	compact	covered	compact	covered	compact	covered	compact	covered	compact	covered
Circuit breaker	2 poles	2 poles	3 poles	3 poles	2 poles	2 poles	3 poles	3 poles	3 poles	3 poles
Control unit	NEXYS	NEXYS	NEXYS	NEXYS	NEXYS	NEXYS	NEXYS	NEXYS	TELYS	TELYS
CM303 Card for measurement	•	•	•	•	•	•	•	•	•	•
CM301 / CM402 Prewiring for auto start-up	•	•	•	•	•	•	•	•	•	•
Hose	•	•	•	•	•	•	•	•	•	•
Silencer	•	•	•	•	•	•	•	•	•	•
CM307 Analogue Pack	•	•	•	•	•	•	•	•	•	•
Silencer	•	•	•	•	•	•	•	•	•	•

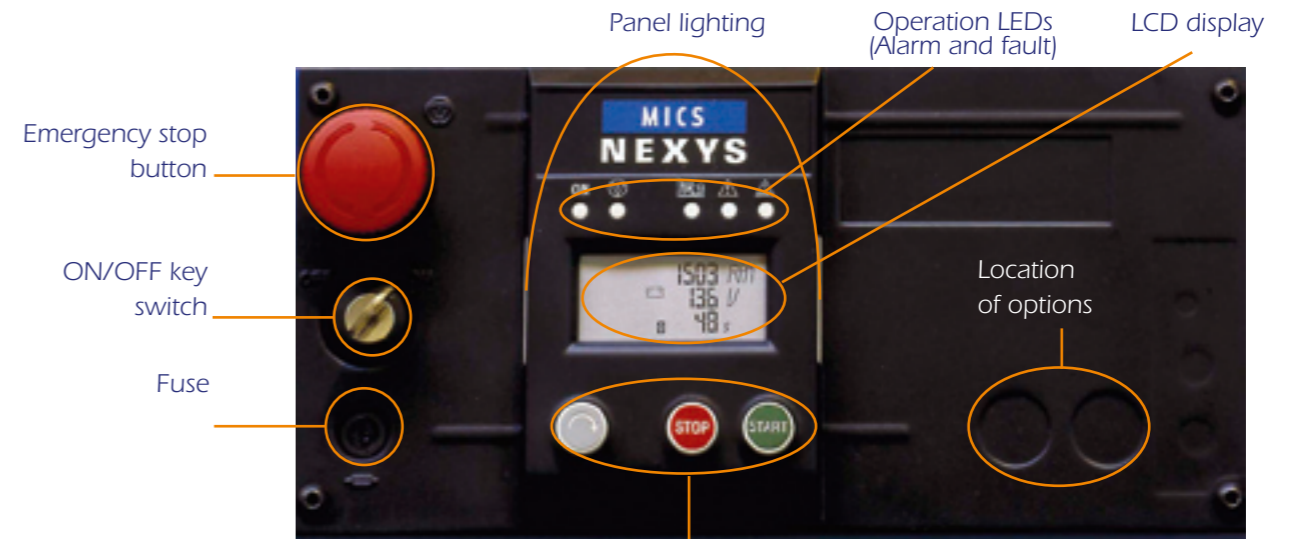
TYPES OF CONTROL UNIT	NEXYS	TELYS	KERYS
Pacific	●	○	X
Montana (J20 to J300)	●	○	X
Montana (J350 to J440)	X	●	○
Atlantic (V200U-V220C2)	●	○	X
Atlantic (> V220)	X	●	○

● Standard  
○ Option  
X Not possible

## INTRODUCTION

The NEXYS, SDMO's new entry-level control unit, enables operation in both manual and automatic mode. Modular in design, it offers high-quality basic functions, allowing easy and reliable operation of your generating set.

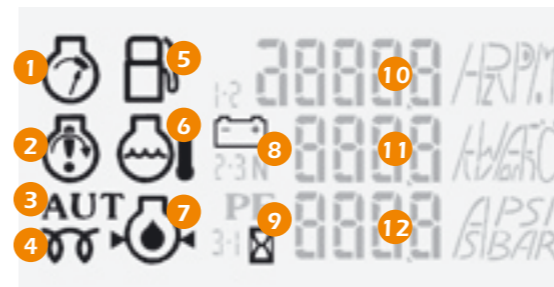
## NEXYS



Scrolling display button / Generating set stop button / Generating set start button

## OPERATION AND PROTECTION

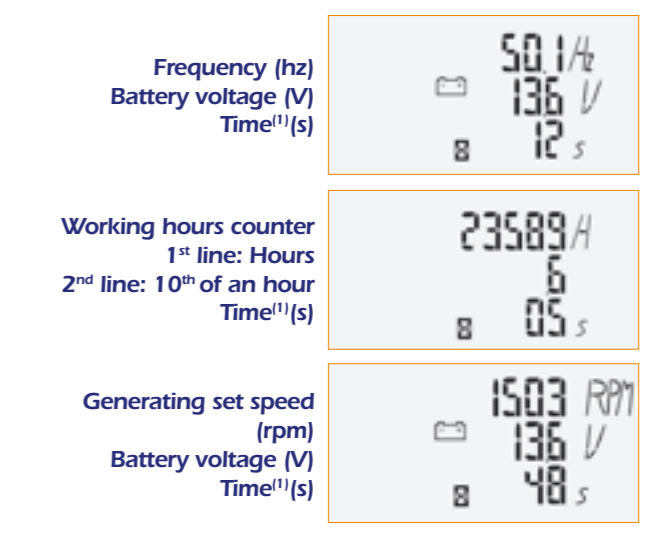
### Symbols for operation, alarms and faults



Operation	Alarms and faults
3 + 9 AUTO Operation	1 Overspeed
4 + 9 Air preheating	2 Fail to start
5 + 10 Fuel Level	5 Low fuel indicator
6 + 11 Coolant temperature	6 Coolant temperature
7 + 12 Oil pressure	7 Oil pressure
8 + 11 Battery voltage:	8 Charging alternator

## MEASUREMENTS

### Standard LCD display



(1) Air preheating, start-up attempt, micro-disconnection, mains return



## INTRODUCTION

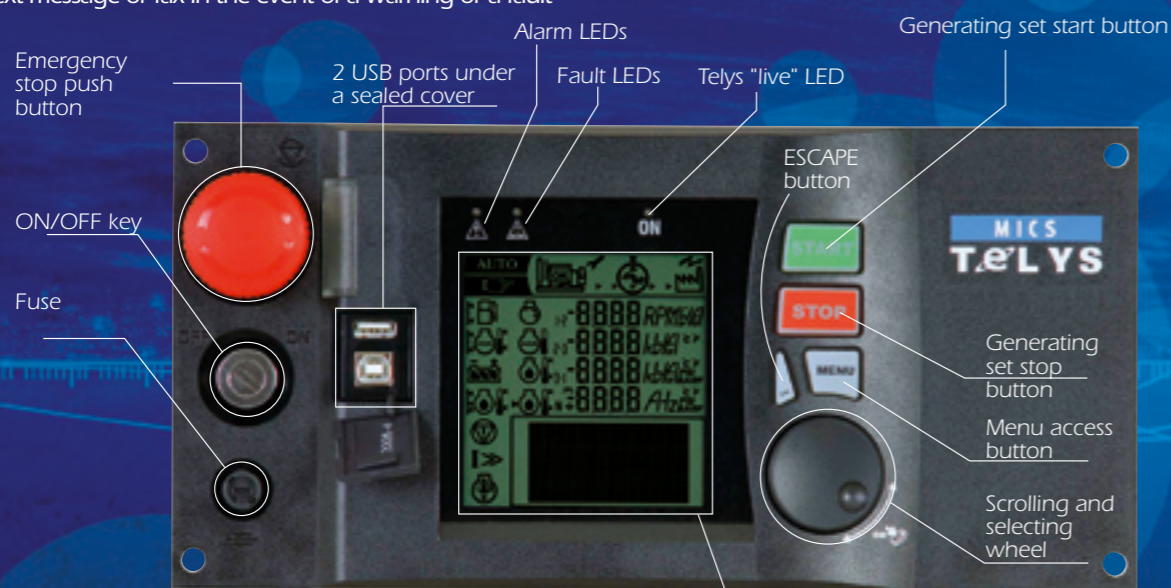
Telys, SDMO's flagship product, integrates new options and offers improved ergonomics and a more user-friendly design. It is even more straightforward, with the emphasis on communication (USB connections, PC connections, control software and remote operation).

Its design, inspired by the NEXYS, has reduced the number of buttons to offer you simplicity when operating your generating set. It also offers the following new features:

- Integrated maintenance monitoring programme (on-screen display of future maintenance operations)
- Built-in fault finding tool guiding the user in the event of any alarms or faults
- Viewing and remote control functions with option to send (b) an E-mail, text message or fax in the event of a warning or a fault

- Optional tropicalisation of the cards to provide protection in extremely humid conditions (b)
- Compliance with numerous legal and regulatory requirements (EC)
- Screen with contrast adapted to all types of lighting

(b) As an option



**ZONE 1:** Operation mode (generating set running/auto/manual)

**ZONE 2:** Display of functions via pictograms

**ZONE 3:** Display of mechanical and electrical values and the associated measurements

**ZONE 4:** Operating messages and parameter settings menu

Display screen made up of 4 zones:

## SDMO PRODUCT PLUS

The Telys can now be fitted with viewing and remote control options, allowing the generating set to be actively monitored and managed for increased protection.

## TELYS IN FIGURES

Operation at -20°C to +60°C  
Hygrometry: 95% at 45°, 70% at 50°C, 50% at 60°C  
5 language options, numerous optional languages  
Option to connect up to 5 additional I/O modules (4 inputs/6 outputs) (b)

## TELYS

## INTRODUCTION

The KERYS is a user-friendly, easy to grasp tool, offering a wide range of functions. It is fitted as standard to all generating sets designed for coupling applications, and can be fitted as an option, from 200 kVA, to the rest of our applications. So that all the requirements of high and low voltage power plants can be met, the KERYS can be built into the console, fitted directly onto the generating set or on a separate cabinet. It complies with CE, UL and CSA standards.

7.4 inch LCD TFT Display screen  
Colour graphic display  
Touch screen  
Dimensions: 154 mm x 86 mm

Parameter setting keypad  
For setting parameters, navigating and directly accessing the screens



Control keypad with display LEDs

- Selecting manual mode
- Selecting stop mode
- Selecting automatic mode
- Opening/closing the generating set circuit breaker
- Activating/deactivating the test
- Opening/closing the grid circuit breaker
- LED test
- Stop horn
- Fault clearance

Arrow keys with LED showing activity

The KERYS is available in two versions. The basic MMI (Man/Machine Interface) includes a monochrome LCD screen with a functions keypad. The top of the range version of the KERYS Tactil has a TFT colour touch screen. Both of these two versions has an ergonomic interface for configuration, operation or fault finding.

## ADDITIONAL SPECIFICATIONS

### Measurements

Power factor in the different screens  
Active and reactive powers  
Synchronism (difference in phase, voltage and frequency)  
Harmonics in voltage and current

### Safety features

Overload, short circuit  
Phase current direction  
Neutral current  
Reverse component  
Voltage reserve  
Thermal image  
Presence and absence of voltage  
Maximum active power  
Active and reactive power return  
Homo-polar current and homo-polar current direction  
Restricted earth and homo-polar voltage  
Vector jump, min Z and df/dt

### Synchronisation

Manual and automatic  
Frequency and voltage equalisation

### Adjustment

Speed and voltage  
Switching frequency and voltage set values  
Adjusting frequency and voltage set values  
Adjusting active and reactive power set values  
Active and reactive power surge keyway  
Active and reactive power distribution  
Active and reactive power return setting  
Manual control of speed and voltage regulations

### Communication

In local mode or remote mode  
Built-in web server  
Via RS485 connection  
Via Ethernet (in local mode) and Internet (in remote mode)

### Plus points integrated as standard

Fault finding aid  
Assistance and maintenance (history, sending of e-mails...)  
Mechanical and electrical parameter archives and curves  
Load impact management  
Addition of supplementary software without external tool

### Configurations

A612: Generating set without grid  
A622: Generating set with normal/emergency switch and grid without coupling  
A633: Production plant without grid  
A634: Production plant with grid and normal/emergency switch (no grid coupling)  
A641: Generating set with permanent coupling to grid without normal/emergency switch - Grid coupling + resale  
A642: Generating set with permanent coupling to grid without normal/emergency switch - Grid coupling + power level 0 kW on the grid  
A651: Generating set with temporary coupling to grid and normal/emergency switch  
A661: Generating set with permanent coupling to grid and normal/emergency switch



Display screen for electrical data

## REMOTE OPERATION AND CONTROL

The KERYS and KERYS Tactil are supplied as standard with integrated operational software. The 60 screen options enable you to have complete control over your installation, regardless of the distance (operation and parameter setting).



# power modules

## SPECIFICATIONS

## CONSOLES AND AIPR

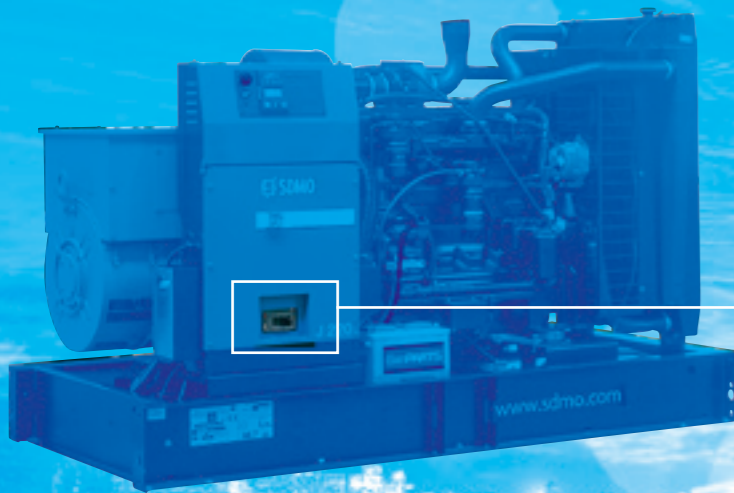
### Power modules in the console

POWER OUTPUT	3 poles	4 poles
Modular circuit breaker or fixed unit from 10A to 125A	X <sup>(1)</sup>	●
Fixed unit circuit breaker 160A to 630A	●	○

Up to 630A, the power modules are integrated into the consoles\*. The extra-flexible cables between the console and the alternator are fitted in a corrugated insulating sleeve.

\* When the motorised control option is selected, the Power module is positioned in AIPR

(1) As standard for some neutral connections  
 ● Standard  
 ○ Option  
 X Not possible



### AIPR

Above 630A, power modules called AIPR are separated from the control/command. These control boxes are fitted on the generating set chassis and connected to the alternator.

	AIPR 1	AIPR 2
<b>With manual control on the front panel</b>		
Compact 3 pole circuit breaker	■	■
Compact 4 pole circuit breaker	○	○
<b>Motorised control option**</b>		
With 3 pole circuit breaker, open type	○	○
With 4 pole circuit breaker, open type	○	○
<b>Other specifications</b>		
Voltage 208V-440V	■	■
Power connection bus bars	■	■
Protection index	IP 207	IP 207
<b>Dimensions</b>		
height (mm)	1020	1260
width (mm)	560	665
depth (mm)	238	360



# Normal/emergency switches

## INTRODUCTION

SDMO offers a new normal/emergency switch for equipment rated from 35 to 160A: VERSO. For equipment with higher ratings, the existing normal/emergency switch coupled to a new version of the TSI module is still available.

		VERSO						TSI									
		35A	63A	80A	100A	125A	160A	200A	250A	400A	630A	800A	1000A	1600A	2000A <sup>(1)</sup>	2500A <sup>(1)</sup>	3150A <sup>(1)</sup>
Dimensions	Heights (mm)	400	400	400	400	400	400	800	800	800	800	1000	1000	1000	1800 <sup>(2)</sup>	1800 <sup>(2)</sup>	1800 <sup>(2)</sup>
	Width (mm)	400	400	400	400	400	400	600	600	600	600	800	800	800	1000	1000	1000
	Depth (mm)	200	200	200	200	200	200	200	400	400	400	500	500	500	800	800	800

(1) Integrated into a floor-mounted control box

(2) On a base plate h=200 mm, i.e. control box of height 1600 + 200

## INTRODUCTION

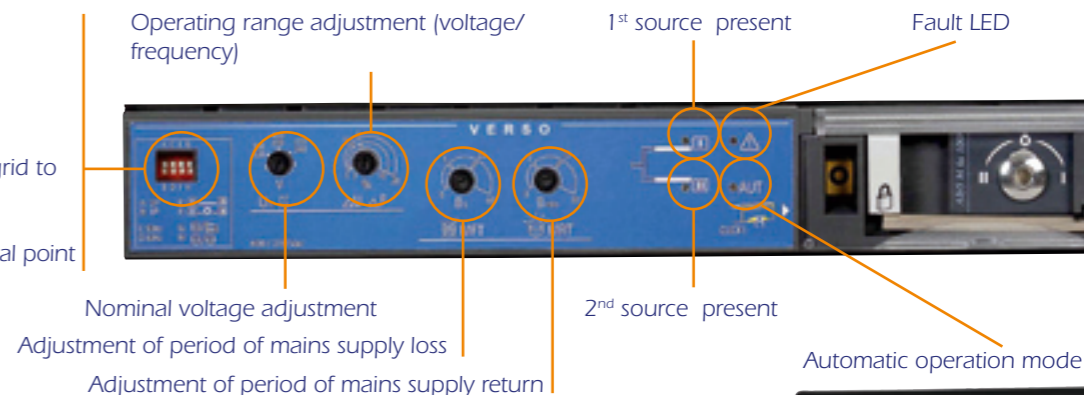
## VERSO

VERSO is not only a changeover switch but it also features integrated mains detection and enables automatic start-up and operation of the generating set in the event of a mains power cut.

To increase the reliability and safety of our changeover system, VERSO now enables switch changeover. This control unit uses a 4-pole system, with voltages from 208 to 440V. The control units are designed to enable even cables with large cross-sections to be easily connected. The control unit can be opened via the front panel and both side panels, providing easy access to the terminal connections. Direct access to the main setting controls means that it is simple to use and any possible configuration modifications can be made easily.

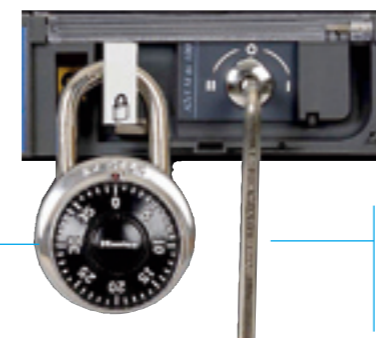
### Switch configuration

- A Three phase
- B Single phase
- C 50 Hz
- D 60 Hz
- E Direct switching from grid to generating set
- F Switching from grid to generating set via neutral point
- G France only
- H Operation



## SDMO PRODUCT PLUS

For greater protection, VERSO can be locked in the neutral position during maintenance phases, using a padlock



## SDMO PRODUCT PLUS

This manual control is used to change over the switch in the event of an electrical control fault



## INTRODUCTION

## TSI

Both innovative and original in design, the TSI is perfectly suited to applications where the transfer of a main source to a replacement source is crucial for the running of your installations.

Straightforward and easy to use, the special feature of this module is that it is automatically configured when voltage is provided from the grid side.

By simply pressing the AUTO key, the following parameters are configured: grid voltage, voltage min/max thresholds, type of use, frequency min/max thresholds.

Electronic switching of the power source means that the unit can be continuously self-supplied.

